

**FEATURES**

- ▶ Industrial DIP-16 Package
- ▶ Ultra-wide 4:1 Input Voltage Range
- ▶ Fully Regulated Output Voltage
- ▶ I/O Isolation 1500 VDC
- ▶ Operating Ambient Temp. Range -40°C to +85°C
- ▶ Under-voltage, Overload and Short Circuit Protection
- ▶ Remote On/Off Control
- ▶ UL/cUL/IEC/EN 62368-1(60950-1) Safety Approval


**PRODUCT OVERVIEW**

The MINMAX MGWI06 series is a new range of isolated 6W DC-DC converter modules featuring fully regulated output voltages and ultra-wide 4:1 input voltage ranges. These products are with a very small footprint occupying just 4.5cm<sup>2</sup> (0.7 square in.) on PCB. An excellent efficiency allows an operating temperature range of -40°C to +85°C. Further features include remote On/Off control, under-voltage, over load and short circuit protection.

The very compact dimensions of these DC-DC converters make them an ideal solution for many space critical applications in battery-powered equipment and instrumentation.

**Model Selection Guide**

Model Number	Input Voltage (Range) VDC	Output Voltage VDC	Output Current		Input Current		Max. capacitive Load μF	Efficiency (typ.) %
			Max.	Min.	@Max. Load	@No Load		
			mA	mA	mA(typ.)	mA(typ.)		
MGWI06-24S033	24 (9 ~ 36)	3.3	1450	218	262	30	330	76
MGWI06-24S05		5	1200	180	316			79
MGWI06-24S12		12	500	75	301		100	83
MGWI06-24S15		15	400	60	301			83
MGWI06-24S24		24	250	38	301		100#	83
MGWI06-24D05		±5	±600	±90	301			82
MGWI06-24D12		±12	±250	±38	301			83
MGWI06-24D15		±15	±200	±30	301		83	
MGWI06-48S033	48 (18 ~ 75)	3.3	1450	218	131	20	330	76
MGWI06-48S05		5	1200	180	158			79
MGWI06-48S12		12	500	75	151		100	83
MGWI06-48S15		15	400	60	151			83
MGWI06-48S24		24	250	38	151		100#	83
MGWI06-48D05		±5	±600	±90	151			82
MGWI06-48D12		±12	±250	±38	151			83
MGWI06-48D15		±15	±200	±30	151		83	

# For each output

**Input Specifications**

Parameter	Model	Min.	Typ.	Max.	Unit
Input Surge Voltage (1 sec. max.)	24V Input Models	-0.7	---	50	VDC
	48V Input Models	-0.7	---	100	
Start-Up Threshold Voltage	24V Input Models	---	---	9	
	48V Input Models	---	---	18	
Under Voltage Shutdown	24V Input Models	---	---	8.5	
	48V Input Models	---	---	17	
Input Filter	All Models	Internal Pi Type			mW
Short Circuit Input Power		---	---	3000	
Conducted EMI		Compliance to EN 55022, class A			

**Remote On/Off Control**

Parameter	Conditions	Min.	Typ.	Max.	Unit
Converter On	2.5V ~ 50VDC or Open Circuit				
Converter Off	-0.7V ~ 0.8V				
Control Input Current (on)	Vin-RC=5V	---	---	500	μA
Control Input Current (off)	Vin-RC=0V	---	---	-500	μA
Control Common	Referenced to Negative Input				
Standby Input Current	Nominal Vin	---	---	10	mA

**Output Specifications**

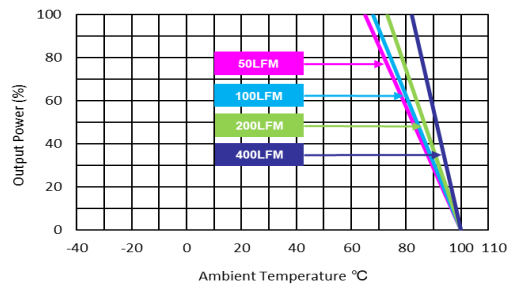
Parameter	Conditions	Min.	Typ.	Max.	Unit
Output Voltage Setting Accuracy		---	±1.0	±2.0	%Vnom.
Output Voltage Balance	Dual Output, Balanced Loads	---	±1.0	---	%
Line Regulation	Vin=Min. to Max. @Full Load	---	±0.5	±1.0	%
Load Regulation	Io=15% to 100%	---	±0.5	±1.2	%
Ripple & Noise	0-20 MHz Bandwidth	---	60	100	mV <sub>P-P</sub>
Transient Recovery Time	25% Load Step Change	---	300	600	μsec
Transient Response Deviation		---	±3	---	%
Temperature Coefficient		---	±0.01	±0.02	%/°C
Over Load Protection	Foldback	110	150	---	%
Short Circuit Protection	Continuous, Automatic Recovery				

**General Specifications**

Parameter	Conditions	Min.	Typ.	Max.	Unit
I/O Isolation Voltage	60 Seconds	1500	---	---	VDC
	1 Seconds	1800	---	---	VDC
I/O Isolation Resistance	500 VDC	1000	---	---	MΩ
I/O Isolation Capacitance	100kHz, 1V	---	1200	1500	pF
Switching Frequency		---	330	---	kHz
MTBF (calculated)	MIL-HDBK-217F@25°C, Ground Benign	350,000			Hours
Safety Approvals	UL/cUL 62368-1 recognition(UL certificate), IEC/EN 62368-1 & 60950-1(CB-report)				

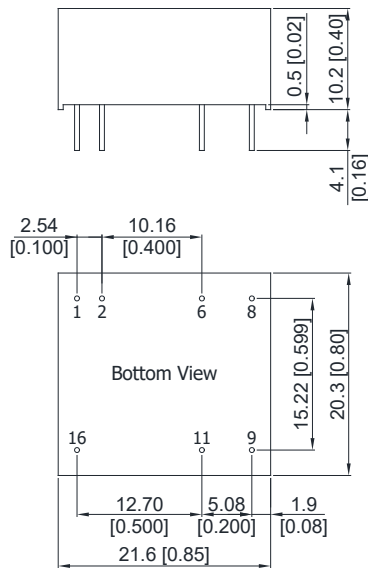
**Environmental Specifications**

Parameter	Min.	Max.	Unit
Operating Ambient Temperature Range (See Power Derating Curve)	-40	+85	°C
Case Temperature	---	+105	°C
Storage Temperature Range	-50	+125	°C
Humidity (non condensing)	---	95	% rel. H
Lead Temperature(1.5mm from case for 10Sec.)	---	260	°C

**Power Derating Curve**


**Notes**

- 1 Specifications typical at Ta=+25°C, resistive load, nominal input voltage and rated output current unless otherwise noted.
- 2 Transient recovery time is measured to within 1% error band for a step change in output load of 75% to 100%.
- 3 These power converters require a minimum output loading to maintain specified regulation, operation under no-load conditions will not damage these modules; however, they may not meet all specifications listed.
- 4 We recommend to protect the converter by a slow blow fuse in the input supply line.
- 5 Other input and output voltage may be available, please contact MINMAX.
- 6 Specifications are subject to change without notice.

**Package Specifications**
**Mechanical Dimensions**

**Pin Connections**

Pin	Single Output	Dual Output	Diameter mm (inches)
1	Remote On/Off	Remote On/Off	∅ 0.5 [0.02]
2	-Vin	-Vin	∅ 0.5 [0.02]
6	NC	Common	∅ 0.5 [0.02]
8	NC	-Vout	∅ 0.5 [0.02]
9	+Vout	+Vout	∅ 0.5 [0.02]
11	-Vout	Common	∅ 0.5 [0.02]
16	+Vin	+Vin	∅ 0.5 [0.02]

NC: No Connection

- ▶ All dimensions in mm (inches)
- ▶ Tolerance: X.X±0.25 (X.XX±0.01)  
X.XX±0.13 (X.XXX±0.005)
- ▶ Pin diameter tolerance: X.X±0.05 (X.XX±0.002)

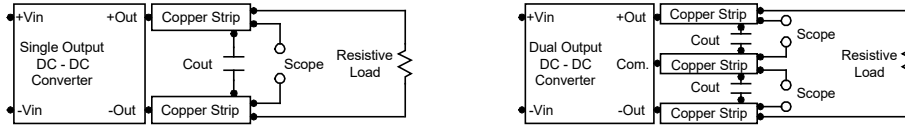
**Physical Characteristics**

Case Size	: 21.6x20.3x10.2 mm (0.85x0.8x0.4 inches)
Case Material	: Plastic resin (flammability to UL 94V-0 rated)
Pin Material	: Copper Alloy
Weight	: 9.1g

### Test Setup

#### Peak-to-Peak Output Noise Measurement Test

Use a  $C_{out}$  0.47  $\mu$ F ceramic capacitor. Scope measurement should be made by using a BNC socket, measurement bandwidth is 0-20 MHz. Position the load between 50 mm and 75 mm from the DC-DC Converter.



### Technical Notes

#### Remote On/Off

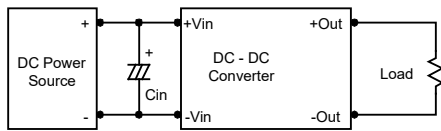
Positive logic remote on/off turns the module on during a logic high voltage on the remote on/off pin, and off during a logic low. To turn the power module on and off, the user must supply a switch to control the voltage between the on/off terminal and the -Vin terminal. The switch can be an open collector or equivalent. A logic low is -0.7V to 0.8V. A logic high is 2.5V to 50V. The maximum sink current of the switch at on/off terminal during a logic low is -500  $\mu$ A. The maximum sink current of the switch at on/off terminal during a logic high is 500  $\mu$ A or open.

#### Overcurrent Protection

To provide protection in a fault (output overload) condition, the unit is equipped with internal current limiting circuitry and can endure current limiting for an unlimited duration. At the point of current-limit inception, the unit shifts from voltage control to current control. The unit operates normally once the output current is brought back into its specified range.

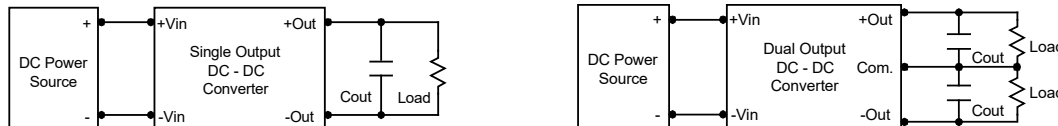
#### Input Source Impedance

The power module should be connected to a low ac-impedance input source. Highly inductive source impedances can affect the stability of the power module. In applications where power is supplied over long lines and output loading is high, it may be necessary to use a capacitor at the input to ensure startup. Capacitor mounted close to the power module helps ensure stability of the unit, it is recommended to use a good quality low Equivalent Series Resistance (ESR < 1.0  $\Omega$  at 100 kHz) capacitor of a 4.7  $\mu$ F for the 24V input devices and a 2.2  $\mu$ F for the 48V devices.



#### Output Ripple Reduction

A good quality low ESR capacitor placed as close as practicable across the load will give the best ripple and noise performance. To reduce output ripple, it is recommended to use 3.3  $\mu$ F capacitors at the output.



#### Maximum Capacitive Load

The MGWI06 series has limitation of maximum connected capacitance at the output. The power module may be operated in current limiting mode during start-up, affecting the ramp-up and the startup time. The maximum capacitance can be found in the data sheet.

#### Thermal Considerations

Many conditions affect the thermal performance of the power module, such as orientation, airflow over the module and board spacing. To avoid exceeding the maximum temperature rating of the components inside the power module, the case temperature must be kept below 105°C. The derating curves are determined from measurements obtained in a test setup.

