

**FEATURES**

- ▶ Industrial Standard Quarter Brick Package
- ▶ Wide Input Range 43-101VDC & 66-160VDC
- ▶ Excellent Efficiency up to 92%
- ▶ I/O Isolation 3000VAC with Reinforced Insulation
- ▶ Operating Ambient Temp. Range -40°C to +80°C
- ▶ No Min. Load Requirement
- ▶ Under-voltage, Overload/Voltage/Temp. and Short Circuit Protection
- ▶ Remote On/Off, Output Voltage Trim, Output Sensing
- ▶ Vibration and Shock/Bump Test EN 61373 Approved
- ▶ Cooling, Dry & Damp Heat Test IEC/EN 60068-2-1, 2, 30 Approved
- ▶ Railway EMC Standard EN 50121-3-2 Approved
- ▶ Railway Certified EN 50155 (IEC60571) Approved
- ▶ Fire Protection Test EN 45545-2 Approved
- ▶ UL/cUL/IEC/EN 62368-1(60950-1) Safety Approval & CE Marking


**PRODUCT OVERVIEW**

The MINMAX MTQZ75 series is a generation of high performance, convection-cooled 75W DC-DC converters designed specifically for railway applications. Both 72(43-101)VDC and 110(66-160)VDC input voltage range is popular in railway usage, and also available in Minmax product lines.

The converters conform to railway industry transient standard EN 50155 and complies also with EMC standard EN 50121-3-2. Advanced circuit topology provides a very high efficiency up to 92% which allows operating temperatures range of -40°C to +80°C. For improved heat dissipation the modules can be supplied with a heatsink. Further product features include high, reinforced insulation, remote On/Off control, under-voltage shutdown as well as overload, over voltage, over temperature and short circuit protection.

**Model Selection Guide**

Model Number	Input Voltage (Range) VDC	Output Voltage VDC	Output Current Max. mA	Input Current		Reflected Ripple Current mA(typ.)	Over Voltage Protection VDC	Max. capacitive Load µF	Efficiency (typ.)
				@Max. Load	@No Load				@Max. Load
				mA(typ.)	mA(typ.)				%
MTQZ75-72S05	72 (43 ~ 101)	5	15000	1170	50	35	6.2	25500	89
MTQZ75-72S12		12	6250	1132	45		15	4400	92
MTQZ75-72S15		15	5000	1132	45		18	2800	92
MTQZ75-72S24		24	3125	1145	55		30	1100	91
MTQZ75-110S05	110 (66 ~ 160)	5	15000	766	40	35	6.2	25500	89
MTQZ75-110S12		12	6250	749	35		15	4400	91
MTQZ75-110S15		15	5000	749	35		18	2800	91
MTQZ75-110S24		24	3125	758	50		30	1100	90

**Input Specifications**

Parameter	Model	Min.	Typ.	Max.	Unit
General	Input Specifications comply to				
Input Surge Voltage (100ms. max)	72V Input Models	-0.7	---	165	VDC
	110V Input Models	-0.7	---	250	
Start-up Threshold Voltage	72V Input Models	---	---	43	
	110V Input Models	---	---	66	
Under Voltage Shutdown	72V Input Models	---	40	---	
	110V Input Models	---	63	---	
Start-up Time	All Models	---	0.35	---	S
Input Filter		Internal Pi Type			

Remote On/Off Control						
Parameter	Conditions	Min.	Typ.	Max.	Unit	
Converter On	3.5V ~ 12V or Open Circuit					
Converter Off	0V ~ 1.2V or Short Circuit					
Control Input Current (on)	Vctrl = 5.0V	---	0.5	---	mA	
Control Input Current (off)	Vctrl = 0V	---	-0.5	---	mA	
Control Common	Referenced to Negative Input					
Standby Input Current	Nominal Vin	---	2.5	---	mA	

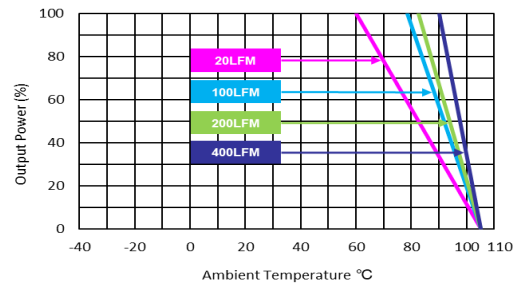
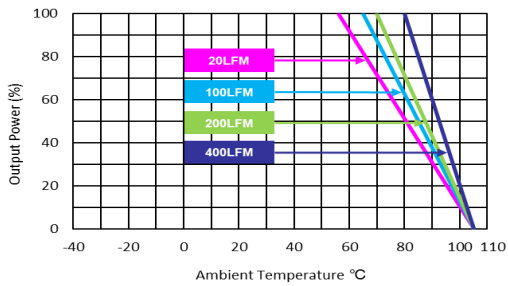
Output Specifications						
Parameter	Conditions / Model	Min.	Typ.	Max.	Unit	
Output Voltage Setting Accuracy		---	---	±1.0	%Vnom.	
Line Regulation	Vin=Min. to Max. @ Full Load	---	---	±0.2	%	
Load Regulation	Io=0% to 100%	---	---	±0.3	%	
Minimum Load	No minimum Load Requirement					
Ripple & Noise <sub>(3)</sub>	0-20 MHz Bandwidth	24V Output	---	---	150	mV <sub>P-P</sub>
		Other Output	---	---	100	mV <sub>P-P</sub>
Transient Recovery Time	25% Load Step Change <sup>(2)</sup>	---	250	---	µsec	
Transient Response Deviation		---	±3	±5	%	
Temperature Coefficient		---	---	±0.02	%/°C	
Trim Up / Down Range (See Page 8)	% of nominal output voltage	---	---	±10	%	
Over Load Protection	Hiccup	---	150	---	%	
Short Circuit Protection	Continuous, Automatic Recovery (Hiccup Mode 0.3Hz typ.)					

General Specifications							
Parameter	Conditions	Min.	Typ.	Max.	Unit		
I/O Isolation Voltage	Reinforced Insulation, Rated For 60 Seconds	3000	---	---	VAC		
Isolation Voltage Input/Output to case		1500	---	---	VDC		
I/O Isolation Resistance	500 VDC	1000	---	---	MΩ		
I/O Isolation Capacitance	100kHz, 1V	---	---	3000	pF		
Switching Frequency		---	320	---	kHz		
MTBF(calculated)	MIL-HDBK-217F@25°C Full Load, Ground Benign	143,800				Hours	
Safety Standards	UL/cUL 60950-1 recognition(UL certificate), IEC/EN 60950-1(CB-report), EN 50155, IEC 60571						
	UL/cUL 62368-1 recognition(UL certificate), IEC/EN 62368-1(CB-report)						

EMC Specifications				
Parameter	Standards & Level			Performance
General	Compliance with EN 50121-3-2 Railway Applications			
EMI <sub>(5)</sub>	Conduction	EN 55032/11	With external components	Class A
	Radiation			
EMS <sub>(5)</sub>	EN 55024			
	ESD	EN 61000-4-2 air ± 8kV, Contact ± 6kV		A
	Radiated immunity	EN 61000-4-3 10V/m		A
	Fast transient	EN 61000-4-4 ±2kV		A
	Surge	EN 61000-4-5 ±2kV		A
	Conducted immunity	EN 61000-4-6 10Vrms		A
	PFMF	EN 61000-4-8 100A/m, 1000A/m For 1 Second		A

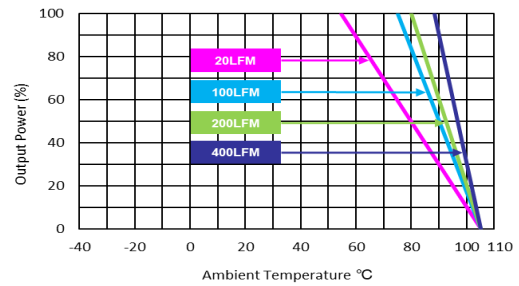
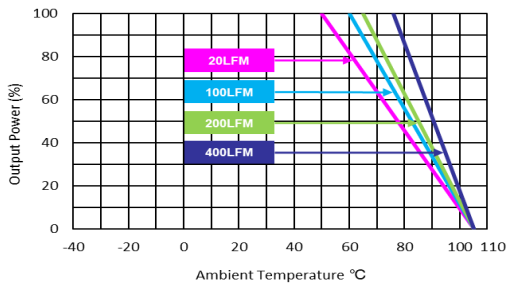
**Environmental Specifications**

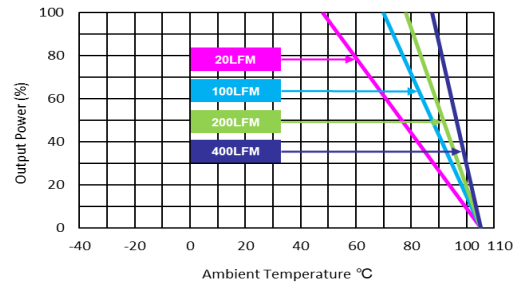
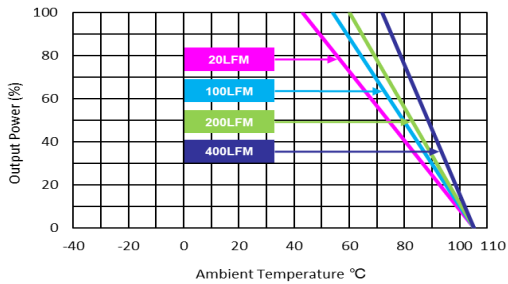
Parameter	Conditions / Model	Min.	Max.		Unit
			without Heatsink	with Heatsink	
Operating Temperature Range Nominal Vin, Load 100% Inom. (for Power Derating see relative Derating Curves)	MTQZ75-72S12, MTQZ75-72S15	-40	56	61	°C
	MTQZ75-72S24		49	55	
	MTQZ75-110S12, MTQZ75-110S15				
	MTQZ75-110S24				
	MTQZ75-72S05, MTQZ75-110S05				
Thermal Impedance	20LFM Convection without Heatsink	7.5	---		°C/W
	20LFM Convection with Heatsink	6.8	---		
	100LFM Convection without Heatsink	6.1	---		
	100LFM Convection with Heatsink	4.1	---		
	200LFM Convection without Heatsink	5.3	---		
	200LFM Convection with Heatsink	3.3	---		
	400LFM Convection without Heatsink	3.9	---		
	400LFM Convection with Heatsink	2.2	---		
Base-plate Temperature Range		-40	+105		°C
Over Temperature Protection (Base Plate)		---	+110		°C
Storage Temperature Range		-50	+125		°C
Cooling	Compliance to IEC/EN 60068-2-1				
Dry Heat	Compliance to IEC/EN 60068-2-2				
Damp Heat	Compliance to IEC/EN 60068-2-30				
Shock & Vibration Test	Compliance to IEC/EN 61373				
Fire Protection Test	Compliance to EN 45545-2				
Operating Humidity (non condensing)		5	95		% rel. H
Lead Temperature (1.5mm from case for 10Sec.)		---	260		°C

**Power Derating Curve**


MTQZ75-72S12, MTQZ75-72S15 Derating Curve without Heatsink

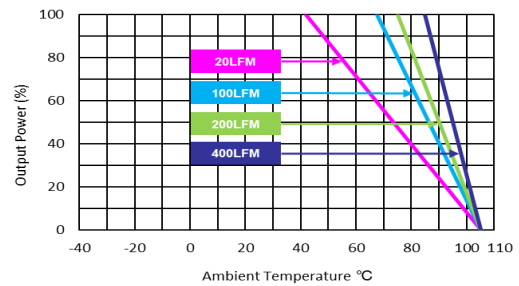
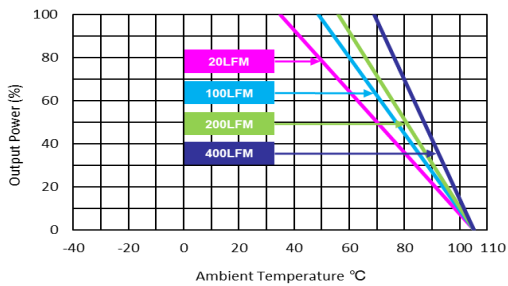
MTQZ75-72S12, MTQZ75-72S15 Derating Curve with Heatsink


 MTQZ75-110S12, MTQZ75-110S15, MTQZ75-72S24  
 Derating Curve without Heatsink

 MTQZ75-110S12, MTQZ75-110S15, MTQZ75-72S24  
 Derating Curve with Heatsink


MTQZ75-110S24 Derating Curve without Heatsink

MTQZ75-110S24 Derating Curve with Heatsink



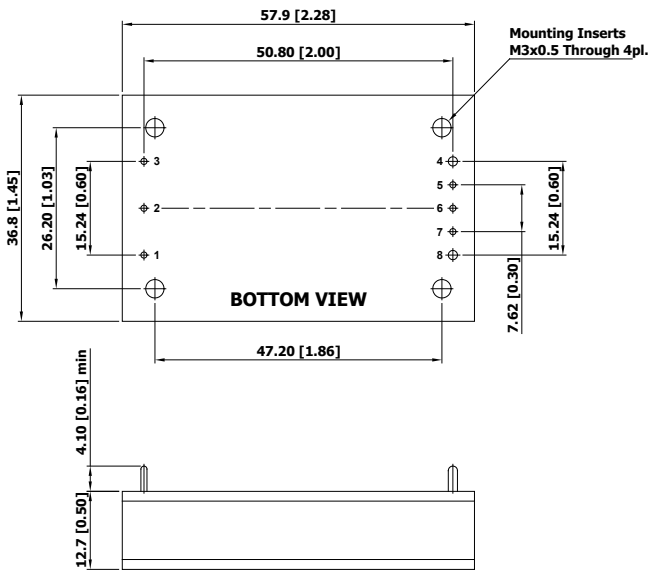
MTQZ75-72S05, MTQZ75-110S05 Derating Curve without Heatsink

MTQZ75-72S05, MTQZ75-110S05 Derating Curve with Heatsink

**Notes**

- 1 Specifications typical at Ta=+25°C, resistive load, nominal input voltage and rated output current unless otherwise noted.
- 2 Transient recovery time is measured to within 1% error band for a step change in output load of 75% to 100%.
- 3 Ripple & Noise measurement with a 1μF/50V MLCC and a 10μF/50V Tantalum Capacitor.
- 4 Other input and output voltage may be available, please contact MINMAX.
- 5 The external components might be required to meet EMI/EMS standard for some of test items. Please contact MINMAX for the solution in detail.
- 6 **It is necessary to parallel a capacitor across the input pins under normal operation. Minimum Capacitance: 68μF/ 200V.**
- 7 Specifications are subject to change without notice.

**Package Specifications**

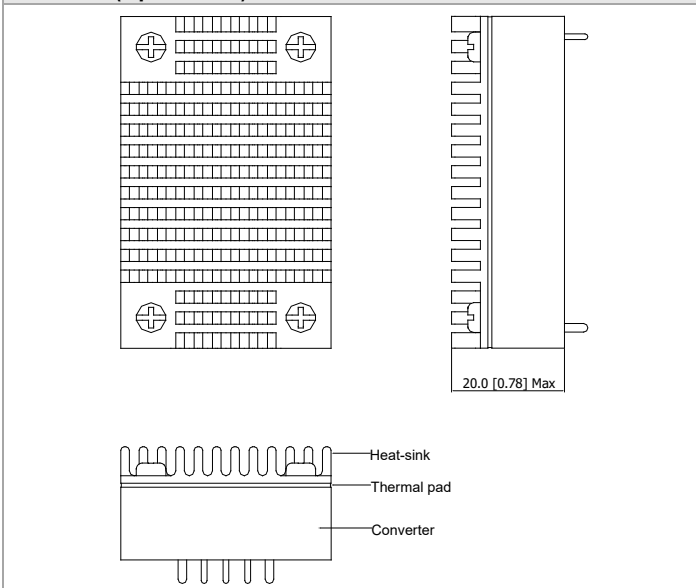
Mechanical Dimensions		Pin Connections		
		Pin	Function	Diameter mm (inches)
		1	+Vin	Ø 1.0 [0.04]
	2	Remote On/Off	Ø 1.0 [0.04]	
	3	-Vin	Ø 1.0 [0.04]	
	4	-Vout	Ø 1.5 [0.06]	
	5	* -Sense	Ø 1.0 [0.04]	
	6	Trim	Ø 1.0 [0.04]	
	7	* +Sense	Ø 1.0 [0.04]	
	8	+Vout	Ø 1.5 [0.06]	

\* If remote sense not used the +sense should be connected to +output and -sense should be connected to -output  
 Maximum output deviation is 10% inclusive of trim  
 \* Please refer to page 6 for pcb installation of power module according to the pictures of standard kit or heatsink kit from end users.

- ▶ All dimensions in mm (inches)
- ▶ Tolerance: X.X±0.5 (X.XX±0.02)  
X.XX±0.25 (X.XXX±0.01)
- ▶ Pin diameter tolerance: X.X±0.05 (X.XX±0.002)

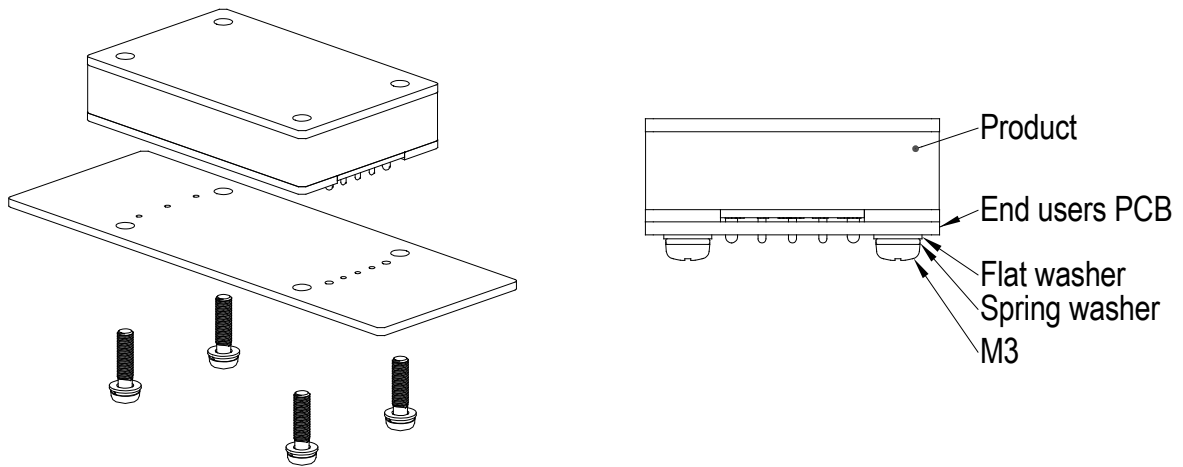
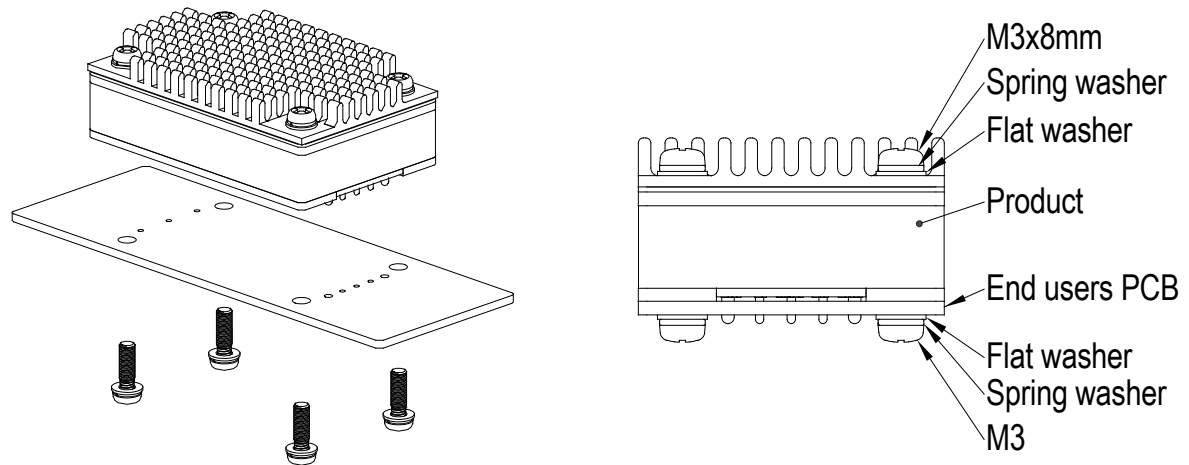
**Physical Characteristics**

Case Size	: 57.9x36.8x12.7 mm (2.28x1.45x0.50 inches)
Case Material	: Metal With Non-Conductive Baseplate
Top Side Base Material	: Aluminum Plate
Bottom Side Base Material	: Non-conductive Black Plastic Base Plate
Pin Material (Input)	: Copper Alloy
Pin Material (Output)	: Copper
Potting Material	: Epoxy (UL94-V0)
Weight	: 61g

**Heatsink (Option -HS)**

**Physical Characteristics**

Heatsink Material	: Aluminum
Finish	: Black Anodized Coating
Weight	: 13g

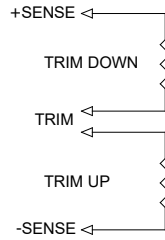
- ▶ The advantages of adding a heatsink are:
  1. To improve heat dissipation and increase the stability and reliability of the DC-DC converters at high operating temperatures.
  2. To increase operating temperature of the DC-DC converter, please refer to Derating Curve.

**PCB Installation of End Users**
**Standard Kit**

**Heatsink Kit**


1. Please evaluate mechanical stress (vibration, shock, bump) during field applications.
2. It has to equip with installation kit if it exceeds the guaranteed specifications, please contact MINMAX for detail information.
3. Applied torque per screw 9 kgf.cm min.

**External Output Trimming**

Output can be externally trimmed by using the method shown below



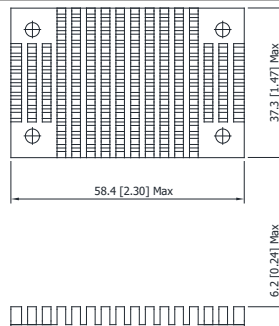
Trim Range (%)	MTQZ75-XXS05		MTQZ75-XXS12		MTQZ75-XXS15		MTQZ75-XXS24	
	Trim down (kΩ)	Trim up (kΩ)	Trim down (kΩ)	Trim up (kΩ)	Trim down (kΩ)	Trim up (kΩ)	Trim down (kΩ)	Trim up (kΩ)
1	138.88	106.87	413.55	351.00	530.73	422.77	598.66	487.14
2	62.41	47.76	184.55	157.50	238.61	189.89	267.78	218.02
3	36.92	28.06	108.22	93.00	141.24	112.26	157.49	128.31
4	24.18	18.21	70.05	60.75	92.56	73.44	102.34	83.46
5	16.53	12.30	47.15	41.40	63.35	50.15	69.25	56.55
6	11.44	8.36	31.88	28.50	43.87	34.63	47.19	38.61
7	7.79	5.55	20.98	19.29	29.96	23.54	31.44	25.79
8	5.06	3.44	12.80	12.37	19.53	15.22	19.62	16.18
9	2.94	1.79	6.44	7.00	11.41	8.75	10.43	8.70
10	1.24	0.48	1.35	2.70	4.92	3.58	3.08	2.72

**Order Code Table**

Standard	With heatsink
MTQZ75-72S05	MTQZ75-72S05-HS
MTQZ75-72S12	MTQZ75-72S12-HS
MTQZ75-72S15	MTQZ75-72S15-HS
MTQZ75-72S24	MTQZ75-72S24-HS
MTQZ75-110S05	MTQZ75-110S05-HS
MTQZ75-110S12	MTQZ75-110S12-HS
MTQZ75-110S15	MTQZ75-110S15-HS
MTQZ75-110S24	MTQZ75-110S24-HS

**Order Code For Heatsink kit (including: Heatsink x1, Screw (M3/8mm x 4, M3/14mm x 2), Thermal Pad x1)**

HS-QB001

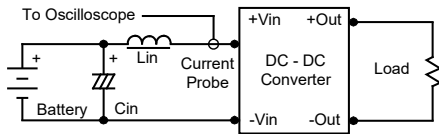




## Test Setup

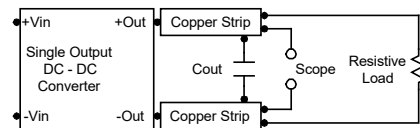
### Input Reflected-Ripple Current Test Setup

Input reflected-ripple current is measured with an inductor  $L_{in}$  ( $4.7\mu\text{H}$ ) and  $C_{in}$  ( $220\mu\text{F}$ ,  $\text{ESR} < 1.0\Omega$  at  $100\text{ kHz}$ ) to simulate source impedance. Capacitor  $C_{in}$  offsets possible battery impedance. Current ripple is measured at the input terminals of the module, measurement bandwidth is  $0\text{-}500\text{ kHz}$ .



### Peak-to-Peak Output Noise Measurement Test

Refer to the output specifications or add  $4.7\mu\text{F}$  capacitor if the output specifications undefine  $C_{out}$ . Scope measurement should be made by using a BNC socket, measurement bandwidth is  $0\text{-}20\text{ MHz}$ . Position the load between  $50\text{ mm}$  and  $75\text{ mm}$  from the DC-DC Converter.



## Technical Notes

### Remote On/Off

Positive logic remote on/off turns the module on during a logic high voltage on the remote on/off pin, and off during a logic low. To turn the power module on and off, the user must supply a switch to control the voltage between the on/off terminal and the  $-V_{in}$  terminal. The switch can be an open collector or equivalent. A logic low is  $0\text{V}$  to  $1.2\text{V}$ . A logic high is  $3.5\text{V}$  to  $12\text{V}$ . The maximum sink current at the on/off terminal (Pin 2) during a logic low is  $-500\mu\text{A}$ .

### Overload Protection

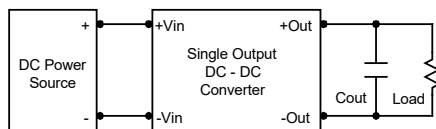
To provide hiccup mode protection in a fault (output overload) condition, the unit is equipped with internal current limiting circuitry and can endure overload for an unlimited duration.

### Overvoltage Protection

The output overvoltage clamp consists of control circuitry, which is independent of the primary regulation loop, that monitors the voltage on the output terminals. The control loop of the clamp has a higher voltage set point than the primary loop. This provides a redundant voltage control that reduces the risk of output overvoltage. The OVP level can be found in the output data.

### Output Ripple Reduction

A good quality low ESR capacitor placed as close as practicable across the load will give the best ripple and noise performance. To reduce output ripple, it is recommended to use  $4.7\mu\text{F}$  capacitors at the output.



### Maximum Capacitive Load

The MTQZ75 series has limitation of maximum connected capacitance at the output. The power module may be operated in current limiting mode during start-up, affecting the ramp-up and the startup time. The maximum capacitance can be found in the data sheet.

### Thermal Considerations

Many conditions affect the thermal performance of the power module, such as orientation, airflow over the module and board spacing. To avoid exceeding the maximum temperature rating of the components inside the power module, the case temperature must be kept below  $105^\circ\text{C}$ . The derating curves are determined from measurements obtained in a test setup.

