

FEATURES

- ▶ Industrial Standard SMD Package
- ▶ Unregulated Output Voltage
- ▶ I/O Isolation 4000VAC with Reinforced Insulation, rated for 250Vrms Working Voltage
- ▶ Low I/O Leakage Current < 2μA
- ▶ Operating Ambient Temp. Range -40°C to 95°C
- ▶ Cleaning-washable Process Available (option)
- ▶ Qualified for Lead-free Reflow Solder Process According to IPC/JEDEC J-STD-020D.1
- ▶ Tape & Reel Package Available
- ▶ Short Circuit Protection
- ▶ Medical EMC Standard with 4th Edition of EMI EN 55011 and EMS EN 60601-1-2 Approved
- ▶ Medical Safety with 2xMOPP per 3rd Edition of IEC/EN 60601-1 & ANSI/AAMI ES60601-1 Approved with CE Marking
- ▶ Risk Management Report Acquisition according to ISO 14971


PRODUCT OVERVIEW

Introducing the MINMAX MSCU01M series – 1W medical-approved isolated DC-DC converters encased in an enclosed SMD-14 package, purposefully designed for medical applications. With an array of 15 models catering to input voltages of 5, 12, and 24VDC, and offering output voltages of 5, 12, 15, ±12, and ±15VDC, this series ensures versatility to meet the diverse requirements of medical devices.

The MSCU01M series boasts an I/O isolation specified for 4000VAC with reinforced insulation, rated for a steadfast 250Vrms working voltage. Additional features include short circuit protection, low I/O leakage current of 2μA max, and an operating ambient temperature range from -40°C to 95°C without derating. Aligned with the 4th edition medical EMC standard, the series holds medical safety approval with 2xMOPP (Means Of Patient Protection) per the 3rd edition of IEC/EN 60601-1 & ANSI/AAMI ES 60601-1.

In adherence to ISO 14971 Medical Device Risk Management, the MSCU01M series undergoes a thorough risk assessment process. This ensures not only compliance with high-performance standards but also alignment with the stringent safety benchmarks outlined in ISO 14971. Elevate your medical devices with the MINMAX MSCU01M series – where advanced technology meets safety, performance, and Medical Device Risk Management Report Acquisition.

Model Selection Guide

Model Number	Input Voltage (Range)	Output Voltage	Output Current		Input Current		Max. capacitive Load	Efficiency (typ.)
			Max.	Min.	@Max. Load	@No Load		
			mA	mA	mA(typ.)	mA(typ.)		μF
MSCU01-05S05M	5 (4.5 ~ 5.5)	5	200	4	263	50	220	76
MSCU01-05S12M		12	84	1.68	252			80
MSCU01-05S15M		15	68	1.36	246			83
MSCU01-05D12M		±12	±42	±0.84	252		100#	80
MSCU01-05D15M		±15	±33	±0.66	236			84
MSCU01-12S05M	12 (10.8 ~ 13.2)	5	200	4	110	35	220	76
MSCU01-12S12M		12	84	1.68	106			79
MSCU01-12S15M		15	68	1.36	106			80
MSCU01-12D12M		±12	±42	±0.84	106		100#	79
MSCU01-12D15M		±15	±33	±0.66	103			80
MSCU01-24S05M	24 (21.6 ~ 26.4)	5	200	4	55	20	220	76
MSCU01-24S12M		12	84	1.68	53			80
MSCU01-24S15M		15	68	1.36	53			80
MSCU01-24D12M		±12	±42	±0.84	53		100#	80
MSCU01-24D15M		±15	±33	±0.66	52			80

* Min. Output Current for Lower Load Regulation

For each output

Input Specifications

Parameter	Model	Min.	Typ.	Max.	Unit
Input Voltage Range	5V Input Models	4.5	5	5.5	VDC
	12V Input Models	10.8	12	13.2	
	24V Input Models	21.6	24	26.4	
Input Surge Voltage (1 sec. max.)	5V Input Models	-0.7	---	9	VDC
	12V Input Models	-0.7	---	18	
	24V Input Models	-0.7	---	30	
Input Filter	All Models	Internal Capacitor			

Output Specifications

Parameter	Conditions	Min.	Typ.	Max.	Unit
Output Voltage Setting Accuracy		---	±1.0	±3.0	%Vnom.
Output Voltage Balance	Dual Output, Balanced Loads	---	±0.1	±1.0	%
Line Regulation	For Vin Change of 1%	---	±1.2	±1.5	%
Load Regulation	Io=10% to 100%	---	---	±10	%
Ripple & Noise	0-20 MHz Bandwidth	---	---	100	mV _{p-p}
Temperature Coefficient		---	±0.01	±0.02	%/°C
Short Circuit Protection	Continuous, Automatic Recovery				

Isolation, Safety Standards

Parameter	Conditions	Min.	Typ.	Max.	Unit
I/O Isolation Voltage	60 Seconds Reinforced insulation, rated for 250Vrms working voltage	4000	---	---	VAC
Leakage Current	240VAC, 60Hz	---	---	2	μA
I/O Isolation Resistance	500 VDC	10	---	---	GΩ
I/O Isolation Capacitance	100kHz, 1V	---	20	---	pF
Safety Standards	ANSI/AAMI ES60601-1, CAN/CSA-C22.2 No. 60601-1 IEC/EN 60601-1 3 rd Edition 2xMOPP				
Safety Approvals	ANSI/AAMI ES60601-1 2xMOPP recognition(UL certificate), IEC/EN 60601-1 3 rd Edition(CB-report)				

General Specifications

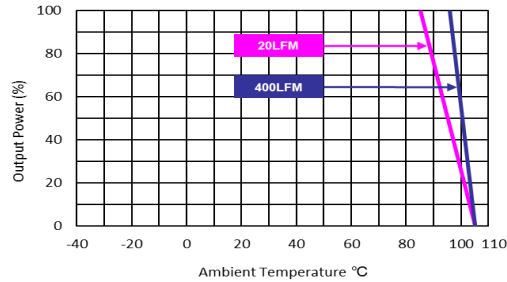
Parameter	Conditions	Min.	Typ.	Max.	Unit
Switching Frequency		---	55	---	kHz
MTBF (calculated)	MIL-HDBK-217F@25°C, Ground Benign	4,771,507	---	---	Hours
Moisture Sensitivity Level (MSL)	IPC/JEDEC J-STD-020D.1	Level 2			

EMC Specifications

Parameter	Standards & Level			Performance
	EMI ₍₅₎	Conduction	EN 55011	With external components
	Radiation	Without external components		
EMS ₍₅₎	EN 60601-1-2 4 th			
	ESD	EN 61000-4-2 Air ± 15kV . Contact ± 8kV		A
	Radiated immunity	EN 61000-4-3 10V/m		A
	Fast transient	EN 61000-4-4 ±2kV		A
	Surge	EN 61000-4-5 ±1kV		A
	Conducted immunity	EN 61000-4-6 10Vrms		A
	PFMF	EN 61000-4-8 30A/m		A

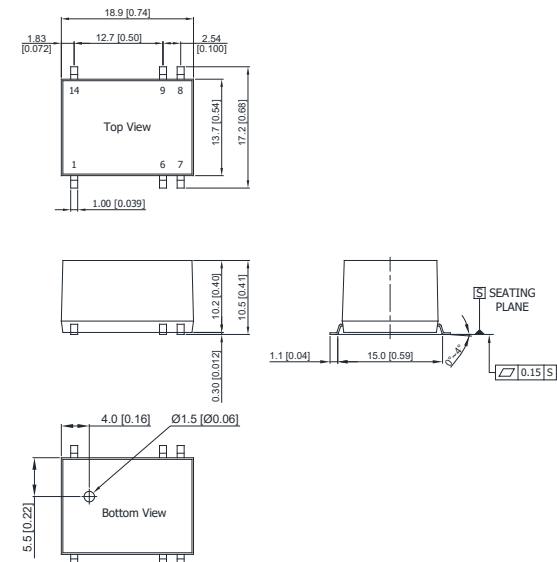
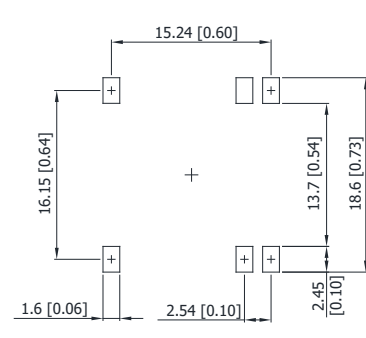
Environmental Specifications

Parameter	Min.	Max.	Unit
Operating Ambient Temperature Range (See Power Derating Curve)	-40	+95	°C
Case Temperature	---	+105	°C
Storage Temperature Range	-50	+125	°C
Humidity (non condensing)	---	95	% rel. H
Lead-free Reflow Solder Process	IPC/JEDEC J-STD-020D.1		

Power Derating Curve

Notes

- Specifications typical at $T_a=+25^{\circ}\text{C}$, resistive load, nominal input voltage and rated output current unless otherwise noted.
- These power converters require a minimum output loading to maintain specified regulation, operation under no-load conditions will not damage these modules; however they may not meet all specifications listed.
- We recommend to protect the converter by a slow blow fuse in the input supply line.
- Other input and output voltage may be available, please contact MINMAX.
- The external components might be required to meet EMI/EMS standard for some of test items. Please contact MINMAX for the solution in detail.
- Specifications are subject to change without notice.
- The repeated high voltage isolation testing of the converter can degrade isolation capability, to a lesser or greater degree depending on materials, construction, environment and reflow solder process. Any material is susceptible to eventual chemical degradation when subject to very high applied voltages thus implying that the number of tests should be strictly limited. We therefore strongly advise against repeated high voltage isolation testing, but if it is absolutely required, that the voltage be reduced by 20% from specified test voltage. Furthermore, the high voltage isolation capability after reflow solder process should be evaluated as it is applied on system.

Package Specifications

Mechanical Dimensions	Connecting Pin Patterns
 <p>Top View dimensions: 18.9 [0.74], 12.7 [0.50], 2.54 [0.100], 1.83 [0.072], 13.7 [0.54], 17.2 [0.68], 1.00 [0.039], 1.1 [0.04], 15.0 [0.59], 1.1 [0.04], 0.30 [0.012], 10.2 [0.40], 10.5 [0.41], 4.0 [0.16], Ø1.5 [Ø0.06], 5.5 [0.22]</p> <p>Side View dimensions: 10.2 [0.40], 10.5 [0.41], 1.1 [0.04], 15.0 [0.59], 1.1 [0.04], 0.30 [0.012]</p> <p>Bottom View dimensions: 4.0 [0.16], Ø1.5 [Ø0.06], 5.5 [0.22]</p>	 <p>Pin Pattern dimensions: 15.24 [0.60], 16.15 [0.64], 13.7 [0.54], 18.6 [0.73], 1.6 [0.06], 2.54 [0.10], 2.45 [0.10]</p>
	<ul style="list-style-type: none"> ▶ All dimensions in mm (inches) ▶ Tolerance: X.X±0.5 (X.XX±0.02) X.XX±0.25 (X.XXX±0.01) ▶ Pins ±0.05 (±0.002)

Pin Connections		
Pin	Single Output	Dual Output
1	-Vin	-Vin
6	NC	Common
7	NC	-Vout
8	+Vout	+Vout
9	-Vout	Common
14	+Vin	+Vin

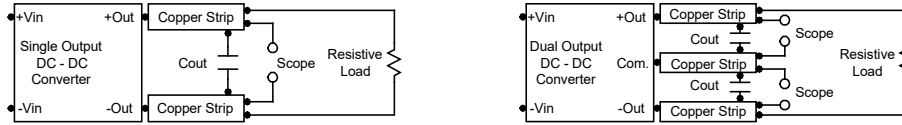
Physical Characteristics	
Case Size	: 18.9x13.7x10.2 mm (0.74x0.54x0.40 inches)
Case Material	: Plastic resin (flammability to UL 94V-0 rated)
Pin Material	: Phosphor Bronze
Weight	: 4.1g

NC: No Connection

Order Code Table	
Standard	For cleaning-washable process
MSCU01-05S05M	MSCU01-05S05M-W
MSCU01-05S12M	MSCU01-05S12M-W
MSCU01-05S15M	MSCU01-05S15M-W
MSCU01-05D12M	MSCU01-05D12M-W
MSCU01-05D15M	MSCU01-05D15M-W
MSCU01-12S05M	MSCU01-12S05M-W
MSCU01-12S12M	MSCU01-12S12M-W
MSCU01-12S15M	MSCU01-12S15M-W
MSCU01-12D12M	MSCU01-12D12M-W
MSCU01-12D15M	MSCU01-12D15M-W
MSCU01-24S05M	MSCU01-24S05M-W
MSCU01-24S12M	MSCU01-24S12M-W
MSCU01-24S15M	MSCU01-24S15M-W
MSCU01-24D12M	MSCU01-24D12M-W
MSCU01-24D15M	MSCU01-24D15M-W

Test Setup
Peak-to-Peak Output Noise Measurement Test

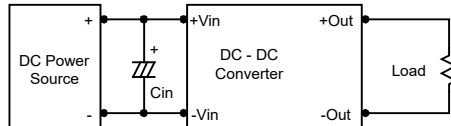
Refer to the output specifications or add 4.7 μ F capacitor if the output specifications undefine Cout.. Scope measurement should be made by using a BNC socket, measurement bandwidth is 0-20 MHz. Position the load between 50 mm and 75 mm from the DC-DC Converter.


Technical Notes
Maximum Capacitive Load

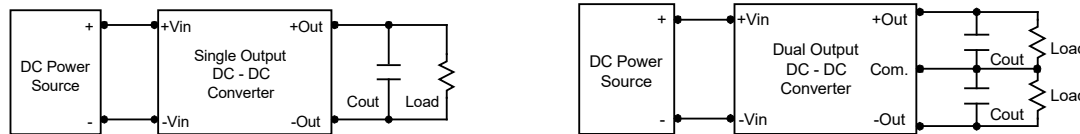
The MSCU01M series has limitation of maximum connected capacitance at the output. The power module may be operated in current limiting mode during start-up, affecting the ramp-up and the startup time. For optimum performance we recommend 100 μ F maximum capacitive load for dual outputs and 220 μ F capacitive load for single outputs. The maximum capacitance can be found in the data sheet.

Input Source Impedance

The power module should be connected to a low ac-impedance input source. Highly inductive source impedances can affect the stability of the power module. In applications where power is supplied over long lines and output loading is high, it may be necessary to use a capacitor at the input to ensure startup. Capacitor mounted close to the power module helps ensure stability of the unit, it is recommended to use a good quality low Equivalent Series Resistance (ESR < 1.0 Ω at 100 kHz) capacitor of a 2.2 μ F for the 5V input devices, a 1.0 μ F for the 12V input devices and a 0.47 μ F for the 24V input devices.


Output Ripple Reduction

A good quality low ESR capacitor placed as close as practicable across the load will give the best ripple and noise performance. To reduce output ripple, it is recommended to use 3.3 μ F capacitors at the output.


Thermal Considerations

Many conditions affect the thermal performance of the power module, such as orientation, airflow over the module and board spacing. To avoid exceeding the maximum temperature rating of the components inside the power module, the case temperature must be kept below 105°C. The derating curves are determined from measurements obtained in a test setup.

