

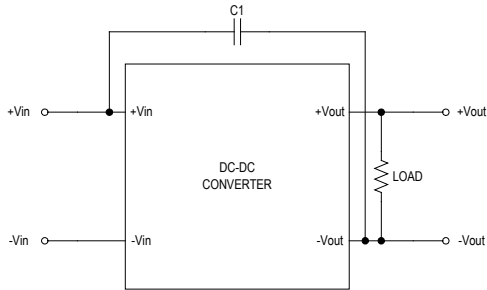


**MINMAX<sup>®</sup>**

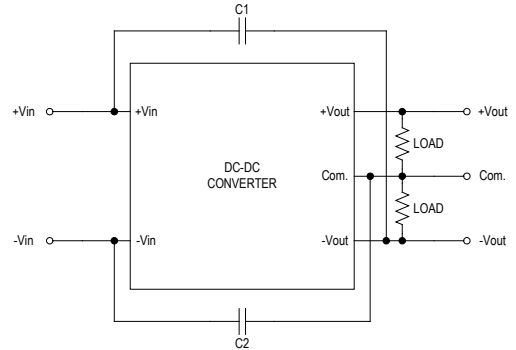
MDWI08 Series - EMC Notes

# MDWI08 Series - EMC Notes

## Meet EMI (Radiation) EN 55032 class A with external filter



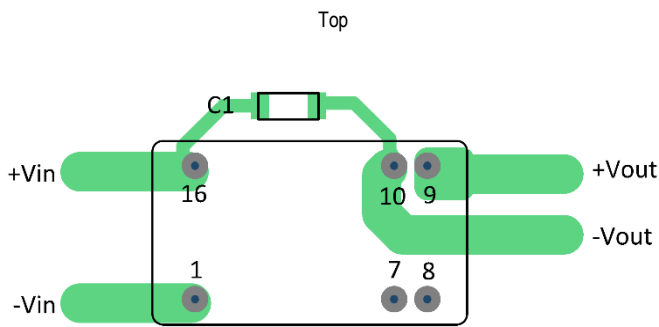
Single Output



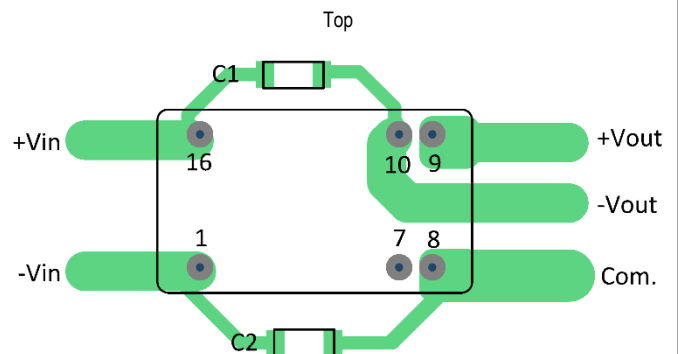
Dual Output

Model	C1	C2
MDWI08-XXSXX	220pF/2kV 1808 X7R	---
MDWI08-XXDXX	470pF/2kV 1808 X7R	470pF/2kV 1808 X7R

## Recommended PCB Layout with Input Filter



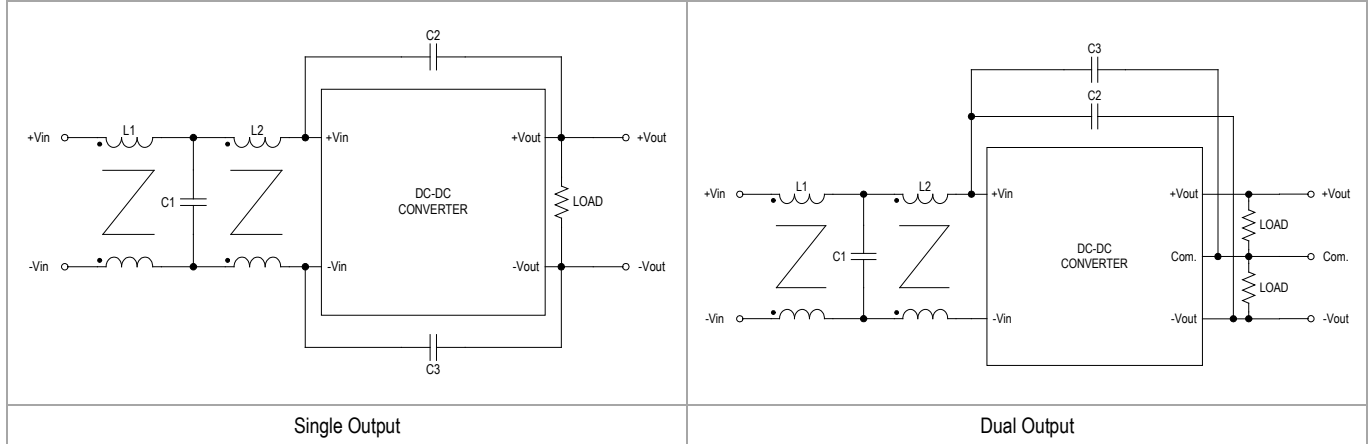
Single Output



Dual Output

# MDWI08 Series - EMC Notes

## Meet EMI (Conduction & Radiation) EN 55032 class B with external filter



Model	L1, L2	C1	C2, C3
MDWI08 Series	0.4mH/4.5A 7448014501	4.7μF/100V 1206	470pF/2kV 1808

## Recommended PCB Layout with Input Filter

