



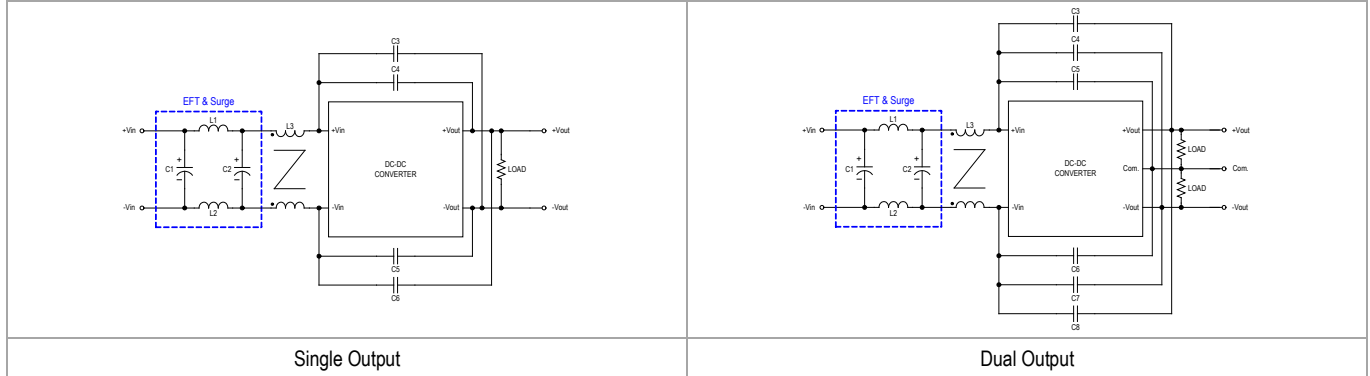
MINMAX[®]

MDW15 Series - EMC Notes

MDW15 Series - EMC Notes

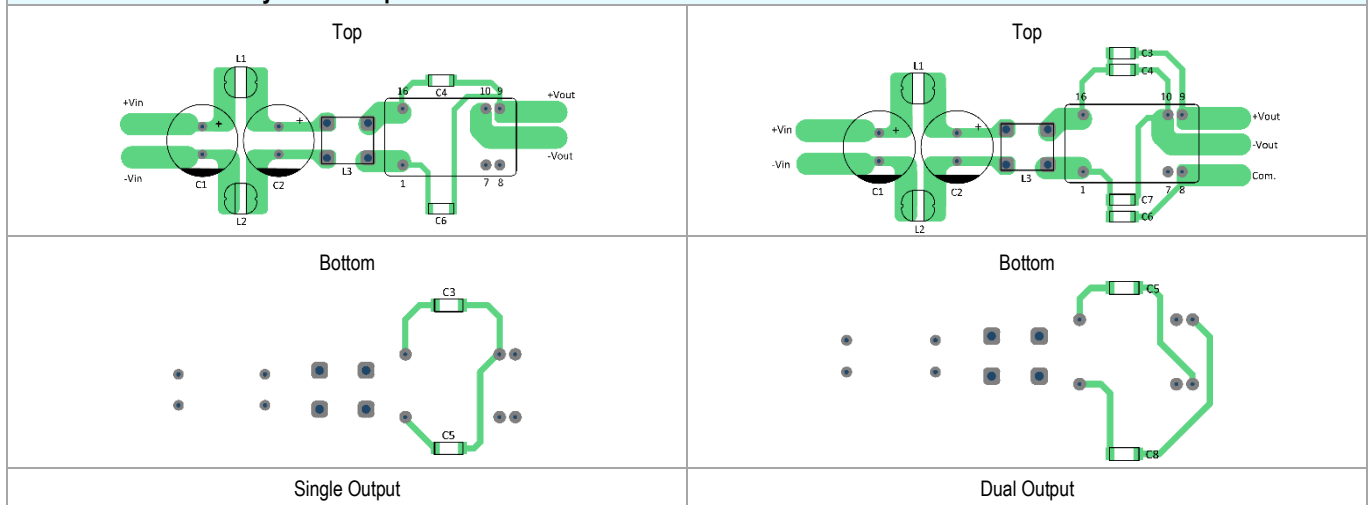
MDW15 Series meet EN 55032 Conducted Emissions Class A without external components.

External Filter meets Total solution (for EFT & Surge & Radiation) EN 55032, class A



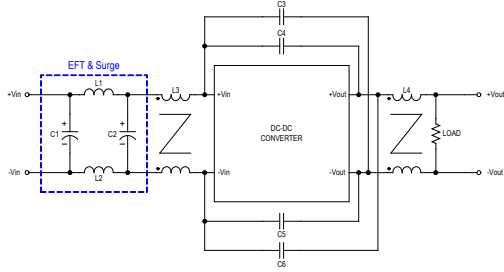
Model	C1, C2	L1, L2	L3	C3	C4	C5	C6	C7	C8
MDW15-12SXX	820µF/25V CHEMI-CON KY Series	10µH/2.2A/ 78mΩ 74477410	---	---	1000pF/2kV 1808 X7R	1000pF/2kV 1808 X7R	---	---	---
MDW15-12DXX	820µF/25V CHEMI-CON KY Series	10µH/2.2A/ 78mΩ 74477410	---	---	1000pF/2kV 1808 X7R	680pF/2kV 1808 X7R	680pF/2kV 1808 X7R	---	1000pF/2kV 1808 X7R
MDW15-24SXX	470µF/50V CHEMI-CON KY Series	10µH/2.2A/ 78mΩ 74477410	---	---	1000pF/2kV 1808 X7R	1000pF/2kV 1808 X7R	---	---	---
MDW15-24D12	470µF/50V CHEMI-CON KY Series	10µH/2.2A/ 78mΩ 74477410	---	---	---	1000pF/2kV 1808 X7R	---	---	1000pF/2kV 1808 X7R
MDW15-24D15	470µF/50V CHEMI-CON KY Series	10µH/2.2A/ 78mΩ 74477410	---	---	1000pF/2kV 1808 X7R	---	---	---	1000pF/2kV 1808 X7R
MDW15-48SXX	220µF/100V CHEMI-CON KY Series	10µH/2.2A/ 78mΩ 74477410	744273222	1000pF/2kV 1808 X7R	680pF/2kV 1808 X7R	1000pF/2kV 1808 X7R	680pF/2kV 1808 X7R	---	---
MDW15-48DXX	220µF/100V CHEMI-CON KY Series	10µH/2.2A/ 78mΩ 74477410	744273222	1500pF/2kV 1808 X7R	1500pF/2kV 1808 X7R	1800pF/2kV 1808 X7R	1800pF/2kV 1808 X7R	1500pF/2kV 1808 X7R	1500pF/2kV 1808 X7R

Recommended PCB Layout with Input Filter

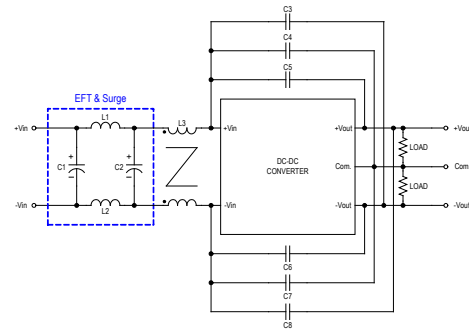


MDW15 Series - EMC Notes

External Filter meets Total solution (for EFT & Surge & EMI) EN 55032, class B



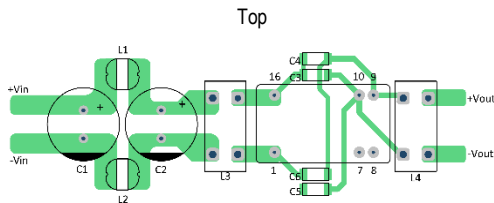
Single Output



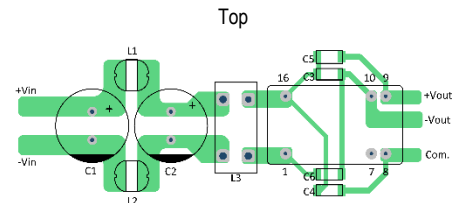
Dual Output

Model	C1, C2	L1, L2	L3	C3	C4	C5	C6	C7	C8	L4
MDW15-12SXX	820µF/25V CHEMI-CON KY Series	10µH/2.2A/ 78mΩ 74477410	744841414	680pF/2kV 1808 X7R	470pF/2kV 1808 X7R	680pF/2kV 1808 X7R	680pF/2kV 1808 X7R	---	---	---
MDW15-12DXX	820µF/25V CHEMI-CON KY Series	10µH/2.2A/ 78mΩ 74477410	744841414	1200pF/2kV 1808 X7R	1200pF/2kV 1808 X7R	680pF/2kV 1808 X7R	680pF/2kV 1808 X7R	470pF/2kV 1808 X7R	470pF/2kV 1808 X7R	---
MDW15-24SXX	470µF/50V CHEMI-CON KY Series	10µH/2.2A/ 78mΩ 74477410	744841414	1200pF/2kV 1808 X7R	330pF/2kV 1808 X7R	1000pF/2kV 1808 X7R	680pF/2kV 1808 X7R	---	---	---
MDW15-24DXX	470µF/50V CHEMI-CON KY Series	10µH/2.2A/ 78mΩ 74477410	744841414	---	1000pF/2kV 1808 X7R	1000pF/2kV 1808 X7R	1000pF/2kV 1808 X7R	1000pF/2kV 1808 X7R	---	---

Recommended PCB Layout with Input Filter



Single Output

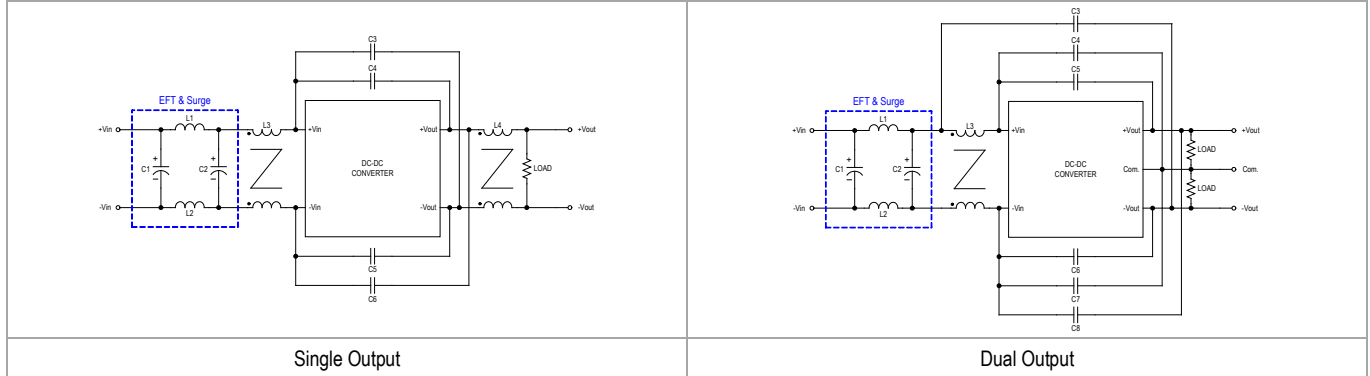


Bottom

Dual Output

MDW15 Series - EMC Notes

External Filter meets Total solution (for EFT & Surge & EMI) EN 55032, class B



Model	C1, C2	L1, L2	L3	C3	C4	C5	C6	C7	C8	L4
MDW15-48S051	220μF/100V CHEMI- CON KY Series	15μH/1.53A/ 89mΩ 744774115	810- ACM12111022PLTL1	1000pF/2kV 1808 X7R	680pF/2kV 1808 X7R	1500pF/2kV 1808 X7R	1000pF/2kV 1808 X7R	---	---	---
MDW15-48S12 MDW15-48S15 MDW15-48S24	220μF/100V CHEMI- CON KY Series	10μH/2.2A/ 78mΩ 74477410	744273222	---	680pF/2kV 1808 X7R	680pF/2kV 1808 X7R	---	---	---	744273222
MDW15-48DXX	220μF/100V CHEMI- CON KY Series	10μH/2.2A/ 78mΩ 74477410	744273222	680pF/2kV 1808 X7R	1000pF/2kV 1808 X7R	2200pF/2kV 1808 X7R	1500pF/2kV 1808 X7R	1200pF/2kV 1808 X7R	1500pF/2kV 1808 X7R	---

Recommended PCB Layout with Input Filter

