

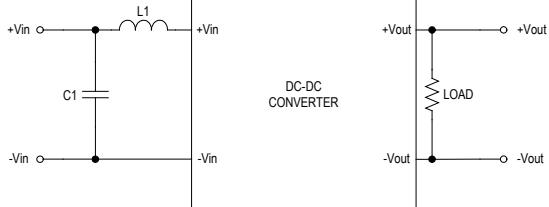


MINMAX[®]

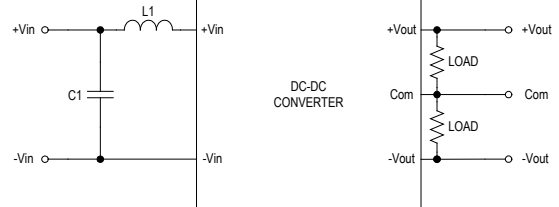
MDHU100 Series - EMC Notes

MDHU100 Series - EMC Notes

External Filter meets Conducted & Radiated EMI EN 55011 & EN 55022, class A



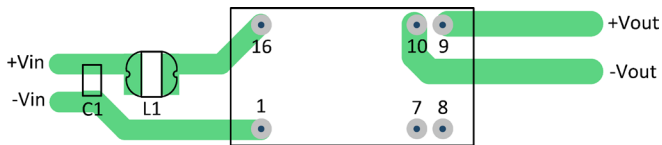
Single Output



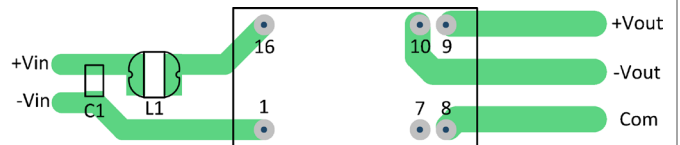
Dual Output

| Model | C1 | L1 |
|----------------|----------------------------------|----------------------------|
| MDHU100 Series | 2.2 μ F/50V 1206 X7R MLCC | 88 μ H SCD0403T-880 |

Recommended PCB Layout with Input Filter



Single Output



Dual Output