

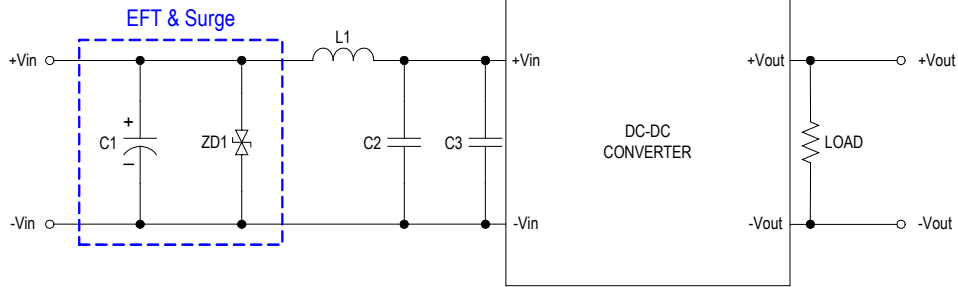


**MINMAX<sup>®</sup>**

**MBSU03 Series - EMC Notes**

# MBSU03 Series - EMC Notes

## External Filter meets Total solution (for EFT & Surge & EMI) EN 55032, class A



Model	C1	ZD1	L1	C2	C3
MBSU03-05SXX	330µF/16V CHEMI-CON KY Series	1.5KE7.5CA (TVS Diode)	3.3µH/1.25A/2512 WE-LQ SMD Inductor 74404024033	22µF/35V 1206 X5R	1µF/100V 1206 X7R
MBSU03-12SXX	470µF/16V CHEMI-CON KY Series	1.5KE18CA (TVS Diode)	3.3µH/1.25A/2512 WE-LQ SMD Inductor 74404024033	22µF/35V 1206 X5R	1µF/100V 1206 X7R
MBSU03-24SXX	560µF/35V CHEMI-CON KZH Series	1.5KE33CA (TVS Diode)	3.3µH/1.25A/2512 WE-LQ SMD Inductor 74404024033	22µF/35V 1206 X5R	1µF/100V 1206 X7R

## Recommended PCB Layout with Input Filter

